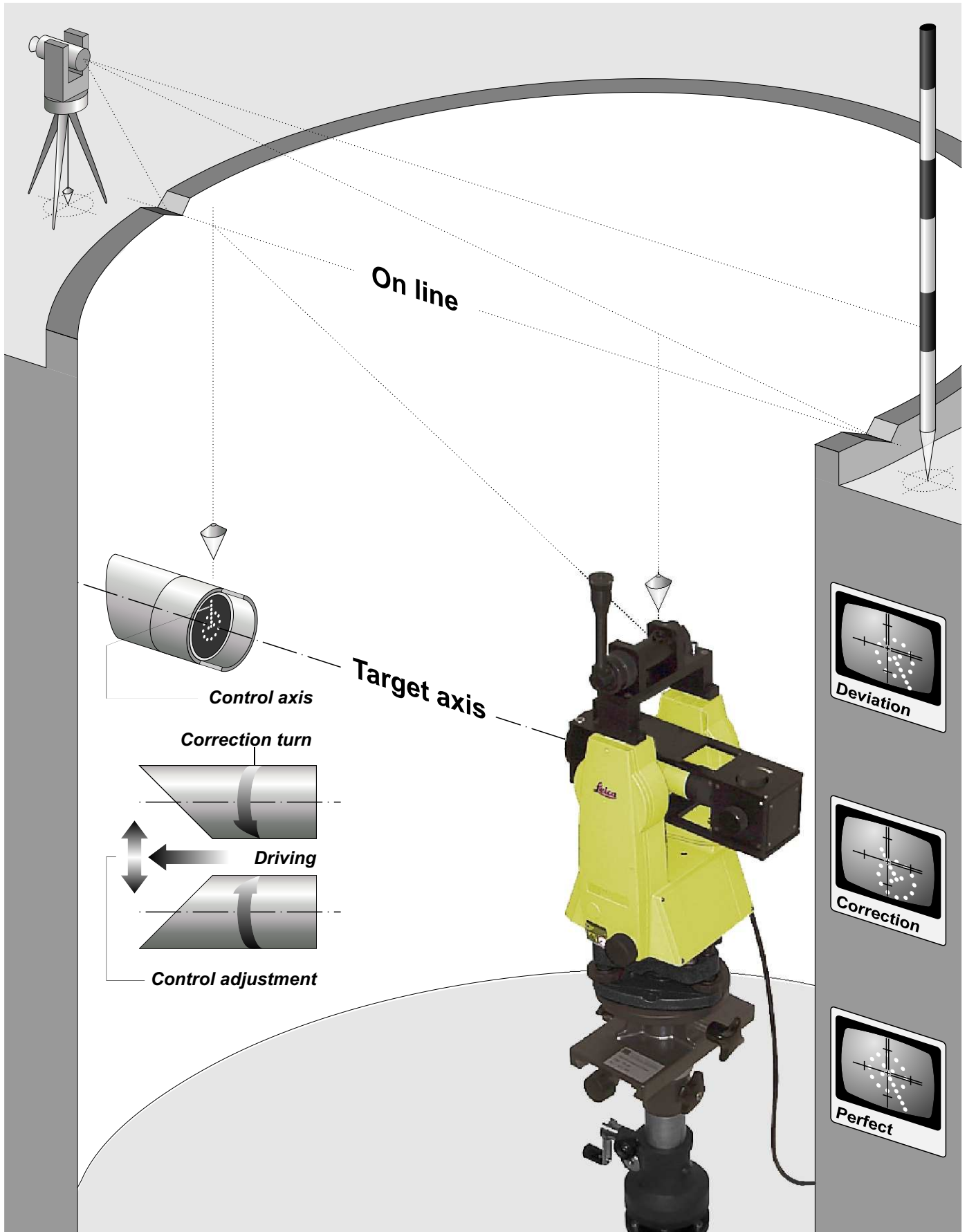


Sure Control for Driving Pilot Pipes

Video Measurement System VM-15



Video Measurement System VM-15

VM-15 with active illuminated target board. Range up to 130 m.

Controlling your way to success

The video measurement system VM-15 was specially developed for controlling pilot pipes. It can also be used for a wide variety of other tasks and has proven itself worldwide in rugged construction site conditions.

The functional principle is as simple as it is ingenious

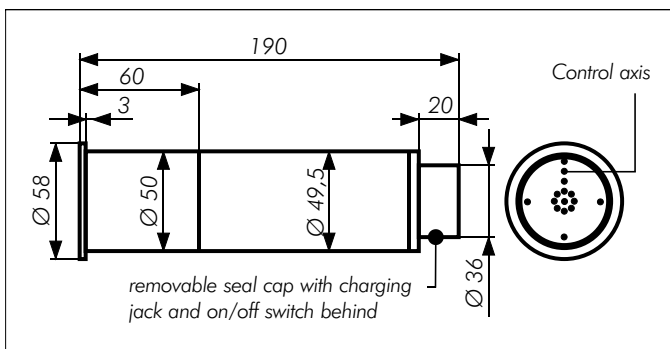
A pilot pipe is pressed through the earth by the ground displacement method. The control adjustment is carried out quite simply by the inclined face of the control head.

The inclination is related to the control axis of the target board. The arrangement of the target board places the all-important control axis in the centre.

The target board is observed with a theodolite. A CCD camera transmits the picture to the monitor. Deviations from the target axis can be seen immediately and are corrected by turning the pilot pipe. The rotation is stopped as soon as the control axis is on the centre point of the telescope reticule. The height and direction are then corrected automatically as driving proceeds. The target axis is reached when the centre of the target board coincides with the centre of the telescope reticule.

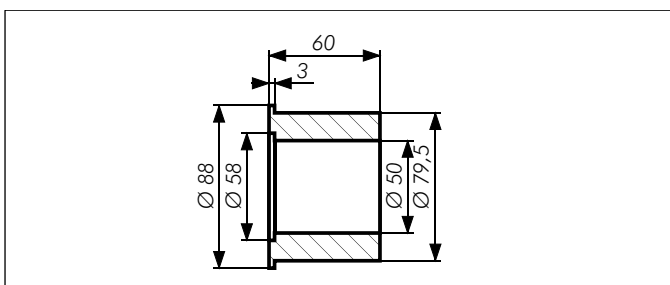
LED target board GEO-2209

Power supply: 2.4 V DC/20 mA
 Operating time of rechargeable battery: to 200 hours
 Battery: 2 x mono NiCd, 1.2 V/4 Ah each
 Dimensions: Ø 58 x 190 mm



Target board adapter

For use of the LED target board GEO-2209 in larger pilot pipes.



System components



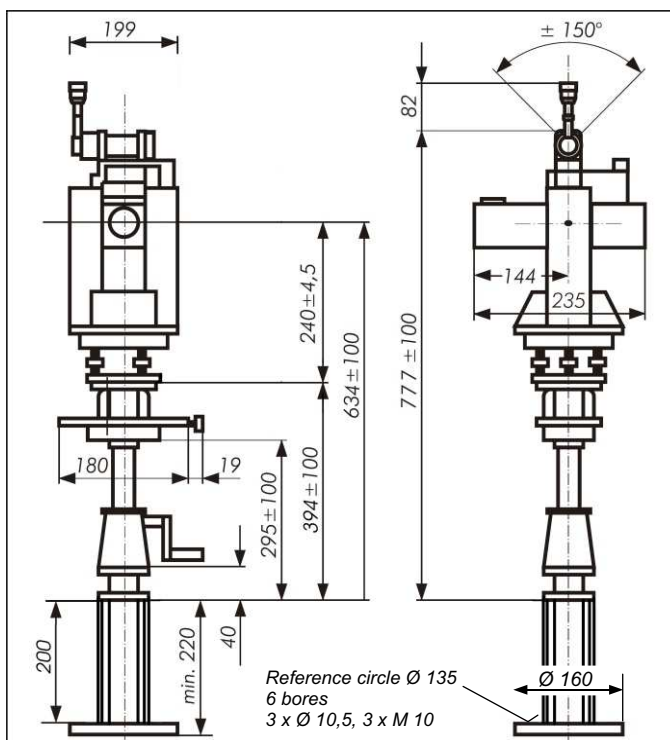
Battery charger LG-29

Charging current: 1 A
 Charging time: 4 ¼ hours, depending on residual charge.
 The charger is switched from boost charging to float charging by U or after 4 ¼ hours by the timer.

12" monitor

Power supply alternatively 230 V/50 Hz or 12 V DC/1.8 A.
 Integrated power supply for theodolite, laser, camera and reticule illumination.

Dimensional sketch



Alignment telescope

The first solution for quick and accurate line transmission and monitoring. Use the good method of line orientation from bottom to top to your advantage.

Zoom camera

Image scale: at 100 m target distance 1 : 0.5 to 1 : 2

GEO-Feinmechanik GmbH

Laser for civil and underground engineering, interior works, machine control

Postfach 13 01 64 Tel: +49(0)208 993570
 45445 Mülheim an der Ruhr Fax: +49(0)208 9935725

Solinger Str. 8 www.geo-laser.de
 45481 Mülheim an der Ruhr geo-team@geo-laser.de

Subject to change. Made in Germany. Date: 03/2006